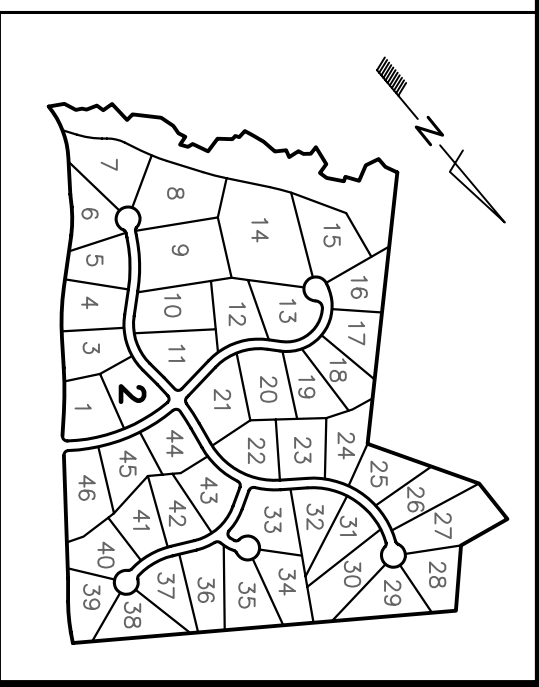
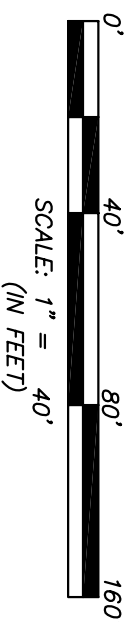
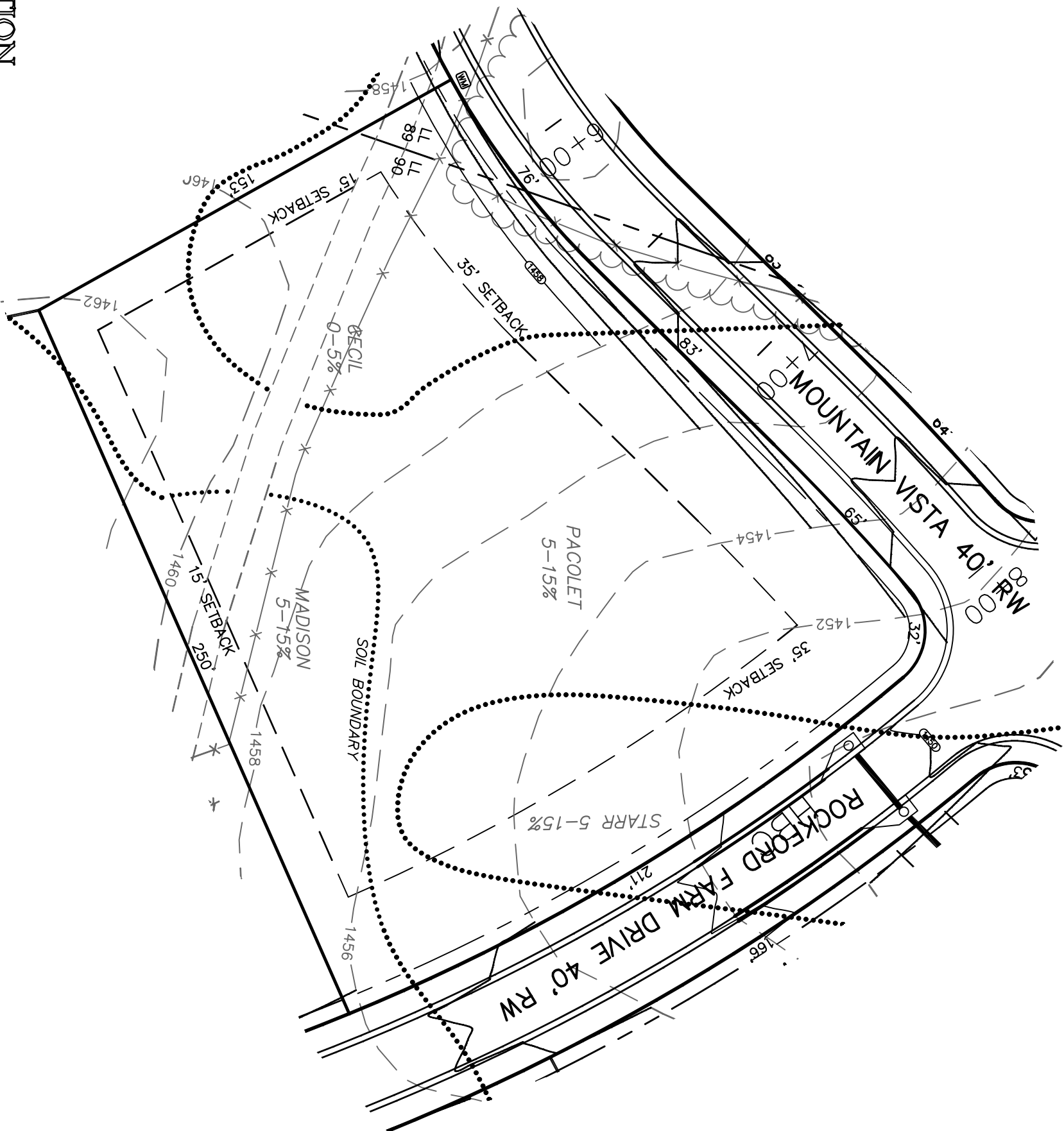
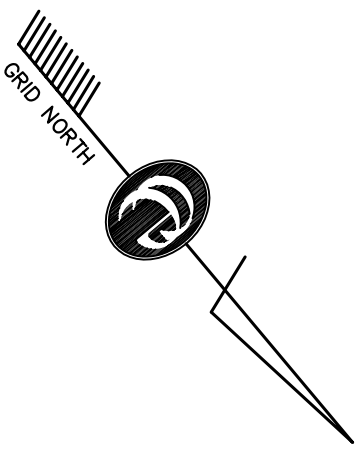


THIS PLAT IS FOR DISPLAY PURPOSES ONLY AND IS NOT SUITABLE FOR RECORDING.

LEGEND	
AC	ACRES
BC	BACK OF CURB
B/S/L	BUILDING SETBACK LINE
C/L	CENTERLINE
C/M/F	CONCRETE MONUM/T FOUND
CMP	CORRUGATED METAL PIPE
CTF	CRIMP TOP FOUND
DB	DEED BOOK
DE	DRAINAGE EASEMENT
EP	EDGE OF PAVEMENT
FH	FIRE HYDRANT
IPF	IRON PIN FOUND
IPS	IRON PIN SET
LL	LAND LOT
LLL	LAND LOT LINE
N/F	NOW OF FORMERLY
O/H	OVERHEAD UTILITY
OTF	OPEN TOP FOUND
PB	PLAT BOOK
P/L	PROPERTY LINE
RBF	REBAR FOUND
RCP	REINF'D CONCRETE PIPE
R/W	RIGHT OF WAY
SF	SQUARE FEET
TB	TELEPHONE BOX
TYP	TYPICAL
WM	WATER METER
WV	WATER VALVE



PREPARED FOR:
 ROCKFORD PROPERTIES
 230 GRAPEVINE RUN
 ATLANTA, GA 30350
 (404) 234-7987

LAYOUT PLAT FOR:
ROCKFORD FARM
LOT 2

1.089 ACRES
 LAND LOTS 89 & 90
 12TH DISTRICT
 HABERSHAM COUNTY, GEORGIA



CONSTRUCTION
 ENGINEERING SERVICES, INC.
 P.O. BOX 1658
 CLARKESVILLE, GA 30523
 PHONE: (706)754-3843
 FAX: (706)754-3843