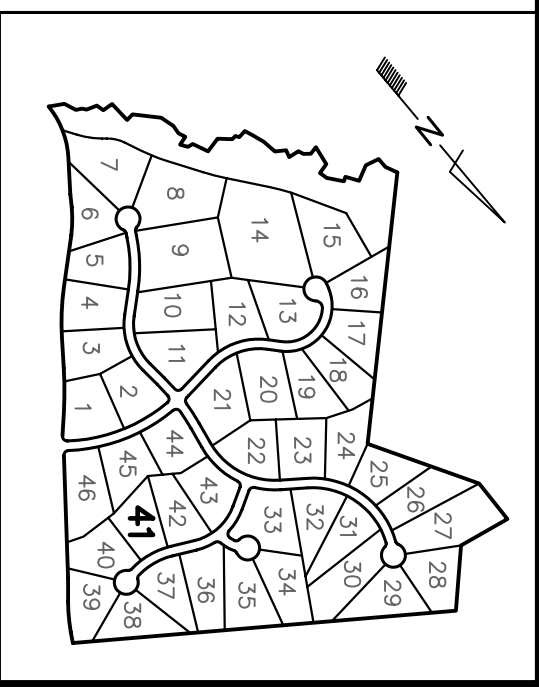
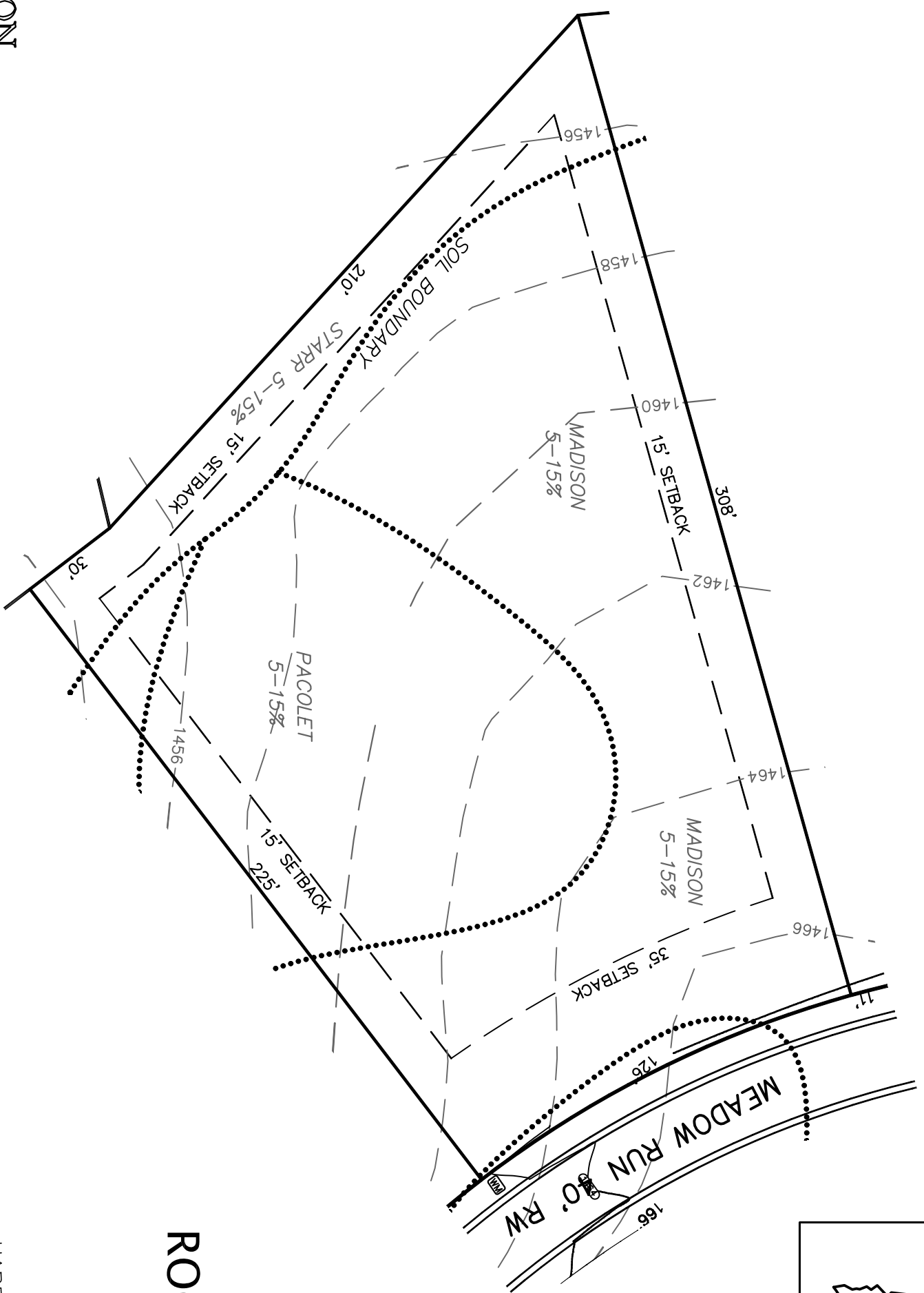
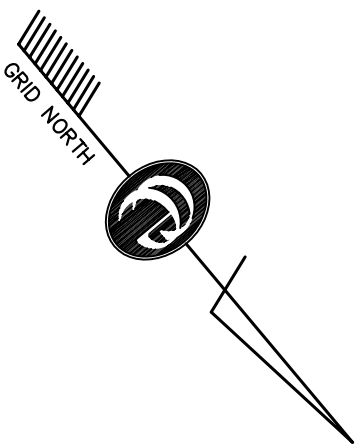


THIS PLAT IS FOR DISPLAY PURPOSES ONLY AND IS NOT SUITABLE FOR RECORDING.

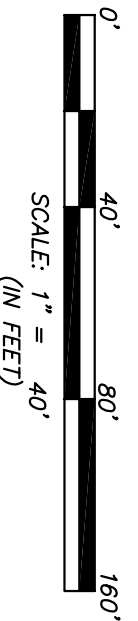
| LEGEND | |
|--------|------------------------|
| AC | ACRES |
| BC | BACK OF CURB |
| B/S/L | BUILDING SETBACK LINE |
| C/L | CENTERLINE |
| C/M/F | CONCRETE MONUM/T FOUND |
| CMP | CORRUGATED METAL PIPE |
| CTF | CRIMP TOP FOUND |
| DB | DEED BOOK |
| DE | DRAINAGE EASEMENT |
| EP | EDGE OF PAVEMENT |
| FH | FIRE HYDRANT |
| IPF | IRON PIN FOUND |
| IPS | IRON PIN SET |
| LL | LAND LOT |
| LL | LAND LOT LINE |
| N/F | NOW OF FORMERLY |
| O/H | OVERHEAD UTILITY |
| OTF | OPEN TOP FOUND |
| PB | PLAT BOOK |
| P/L | PROPERTY LINE |
| RBF | REBAR FOUND |
| RCP | REINF'D CONCRETE PIPE |
| R/W | RIGHT OF WAY |
| SF | SQUARE FEET |
| TB | TELEPHONE BOXTYPICAL |
| TYP | TYPICAL |
| WM | WATER METER |
| WV | WATER VALVE |



PREPARED FOR:
 ROCKFORD PROPERTIES
 230 GRAPEVINE RUN
 ATLANTA, GA 30350
 (404) 234-7987

LAYOUT PLAT FOR:
ROCKFORD FARM
LOT 41

1.021 ACRES
 LAND LOT 90
 12TH DISTRICT
 HABERSHAM COUNTY, GEORGIA



CONSTRUCTION
 ENGINEERING SERVICES, INC.
 P.O. BOX 1658
 CLARKESVILLE, GA 30523
 PHONE: (706)754-3843
 FAX: (706)754-3843