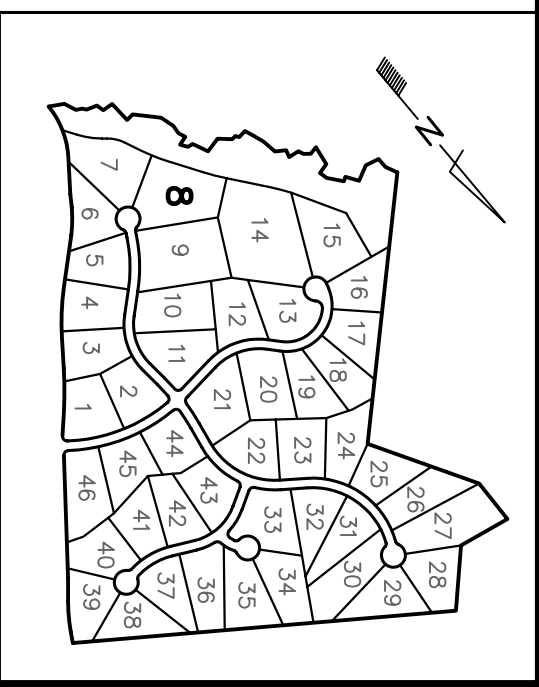
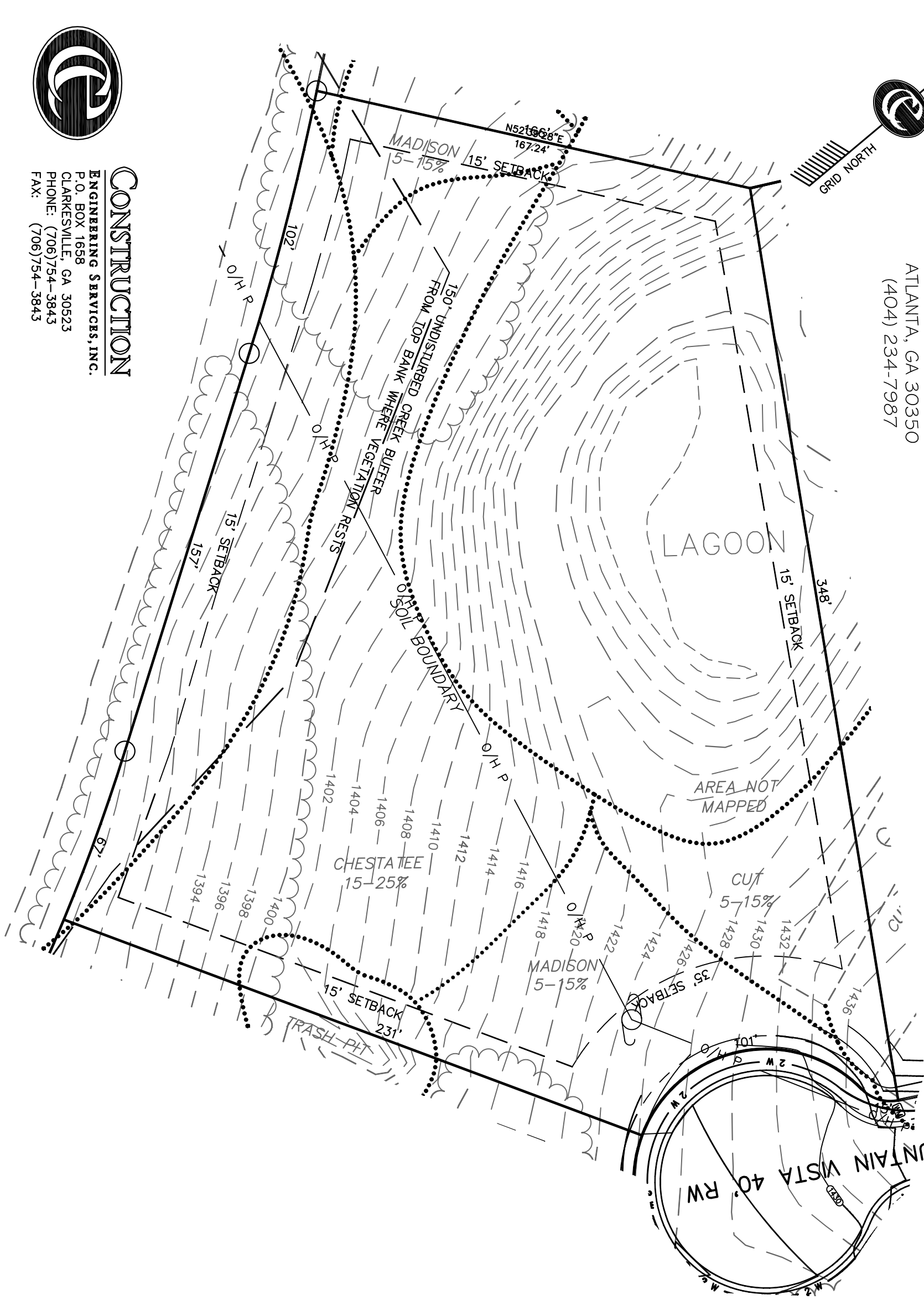
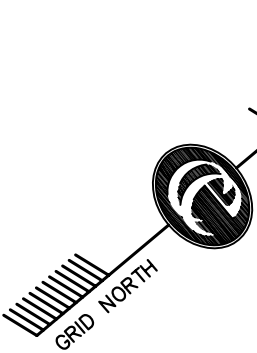


THIS PLAT IS FOR DISPLAY PURPOSES ONLY AND IS NOT SUITABLE FOR RECORDING.

PREPARED FOR:

ROCKFORD PROPERTIES
230 GRAPEVINE RUN
ATLANTA, GA 30350
(404) 234-7987



LEGEND

- AC ACRES
- BC BACK OF CURB
- BSL BUILDING SETBACK LINE
- C/L CENTERLINE
- CMF CONCRETE MONUM'T FOUND
- CMP CORRUGATED METAL PIPE
- CIF CRIMP TOP FOUND
- DB DEED BOOK
- DE DRAINAGE EASEMENT
- EP EDGE OF PAVEMENT
- EP FIRE HYDRANT
- FH FIRE HYDRANT
- IPF IRON PIN FOUND
- IPS IRON PIN SET
- IPF IRON PIN FOUND
- IPF IRON PIN SET
- LL LAND LOT
- LL LAND LOT
- N/F NOW OF FORMERLY
- O/H OVERHEAD UTILITY
- O/F OPEN TOP FOUND
- OF PLAT BOOK
- P/L PROPERTY LINE
- RBF REBAR FOUND
- RCP REINFD CONCRETE PIPE
- R/W RIGHT OF WAY
- SF SQUARE FEET
- TB TELEPHONE BOX
- TYP TYPICAL
- WM WATER METER
- WV WATER VALVE

LAYOUT PLAT FOR:

ROCKFORD FARM
LOT 8

1.878 ACRES
LAND LOT 89
1 2TH DISTRICT
HABERSHAM COUNTY, GEORGIA



SCALE: 1" = 40'
(IN FEET)



CONSTRUCTION
ENGINEERING SERVICES, INC.

P.O. BOX 1658
CLARKESVILLE, GA 30523
PHONE: (706)754-3843
FAX: (706)754-3843